

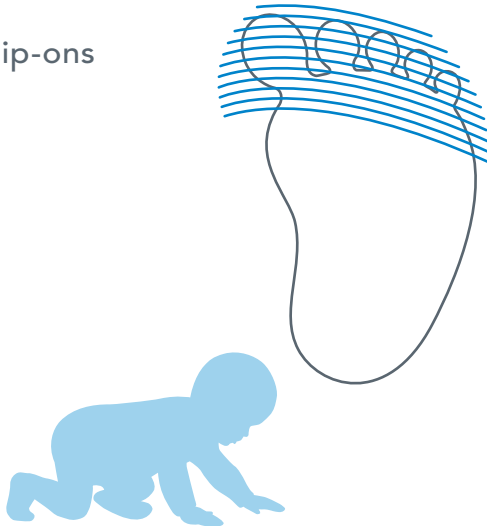
stage 1 crawl

If your infant crawls on multiple points of support including hands, knees or toes.

- soft, protective toe cups let baby glide with ease
- seamless linings for everyday comfort
- roomy fit lets bones and muscles grow naturally
- easy on and off slip-ons

6-9 months

sizes	2	2.5
	3	



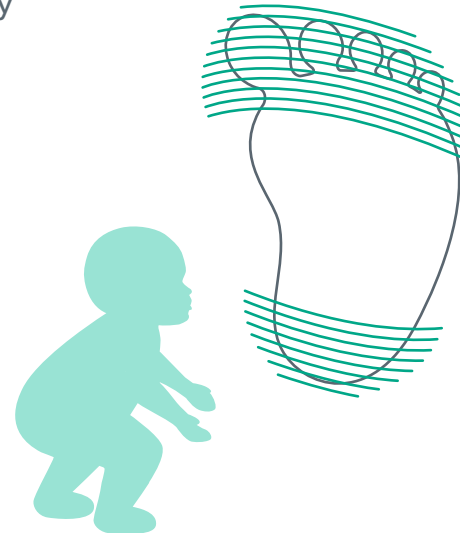
stage 2 stand

If your toddler stands upright balancing on both feet.

- sensory pods at heel and forefoot for better ground feel
- thin soles help protect sensitive feet
- seamless linings for everyday comfort
- roomy, self-adjusting fit allows feet to develop naturally

9-12 months

sizes	3	3.5
	4	4.5
	5	



stage 3 walk

If your child walks steadily.

- molded outsoles for better traction
- sensory pods at heel and forefoot for better balance
- roomy, self-adjusting fit allows feet to continue to develop naturally

12-18 months

sizes	4	4.5
	5	5.5
	6	

